



REAL ESTATE DEVELOPMENT PARTNERS

Land For Sale



701 East Mallard Creek Church Road Charlotte, NC 28262

CONTACT

RED Partners

Rob Hord
&
Bobby Edwards
Bobby@redpart.com
(704)909-2484

www.redpart.com

Every effort has been made to ensure the accuracy of the information presented but no liability is assumed for errors or omissions. This offering is subject to prior sale, lease, change or withdrawal without prior notice and approval of owner.

Location: 701 East Mallard Creek Church Road
Charlotte, NC 28262

Parcel ID #: 05140111

Zoning: INST

Acreage: ± 1.14

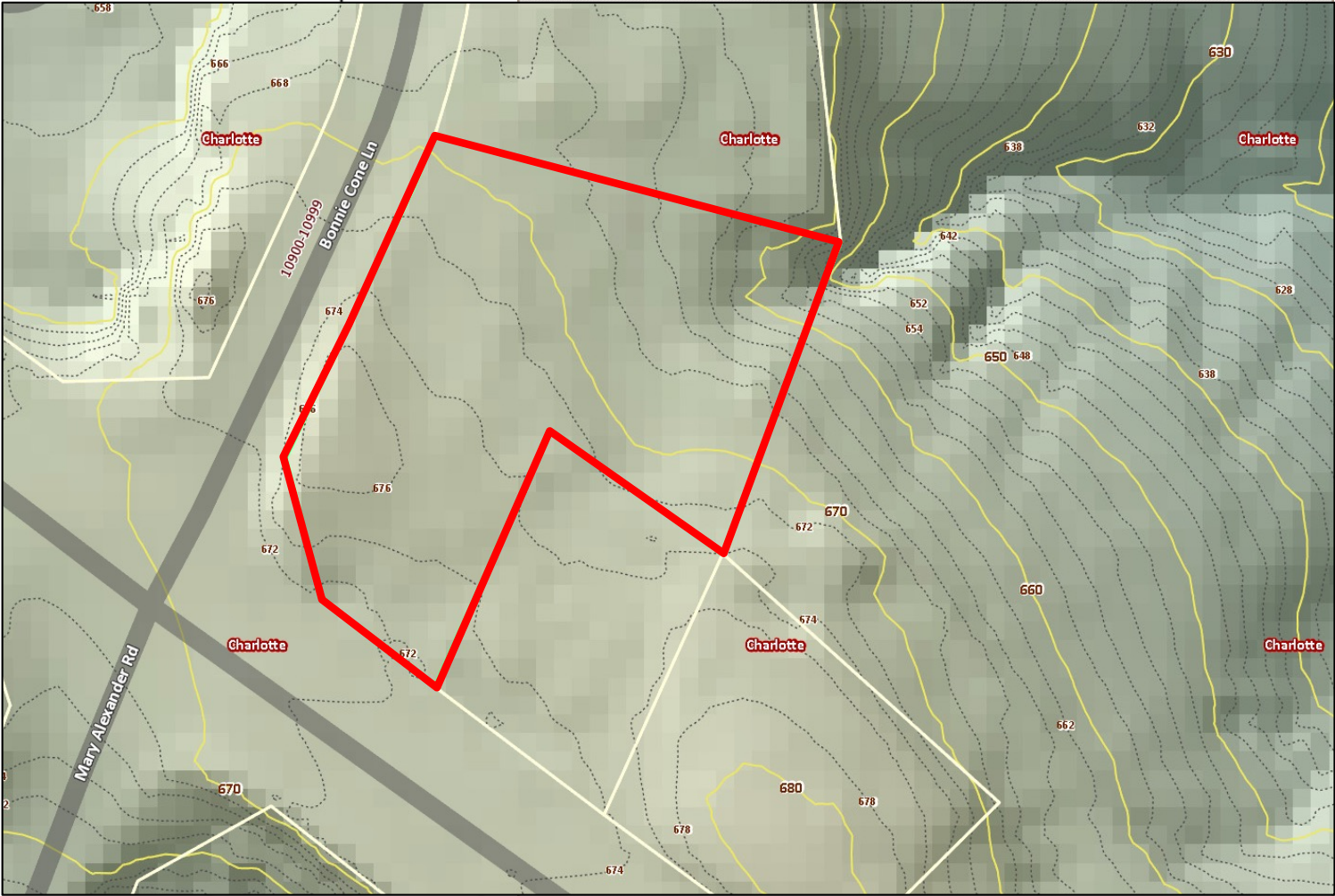
Asking Price: \$750,000

Description: Vacant land development opportunity at the hard corner of East Mallard Creek Church Road and Bonnie Cone Lane. Located just off the campus of UNC-Charlotte with great access to North Tryon Street and University City Boulevard.



REAL
ESTATE
DEVELOPMENT
PARTNERS

Site Topography



CONTACT

RED Partners

Rob Hord
&
Bobby Edwards
Bobby@redpart.com
(704)909-2484

www.redpart.com

701 East Mallard Creek Church Road
Charlotte, NC 28262

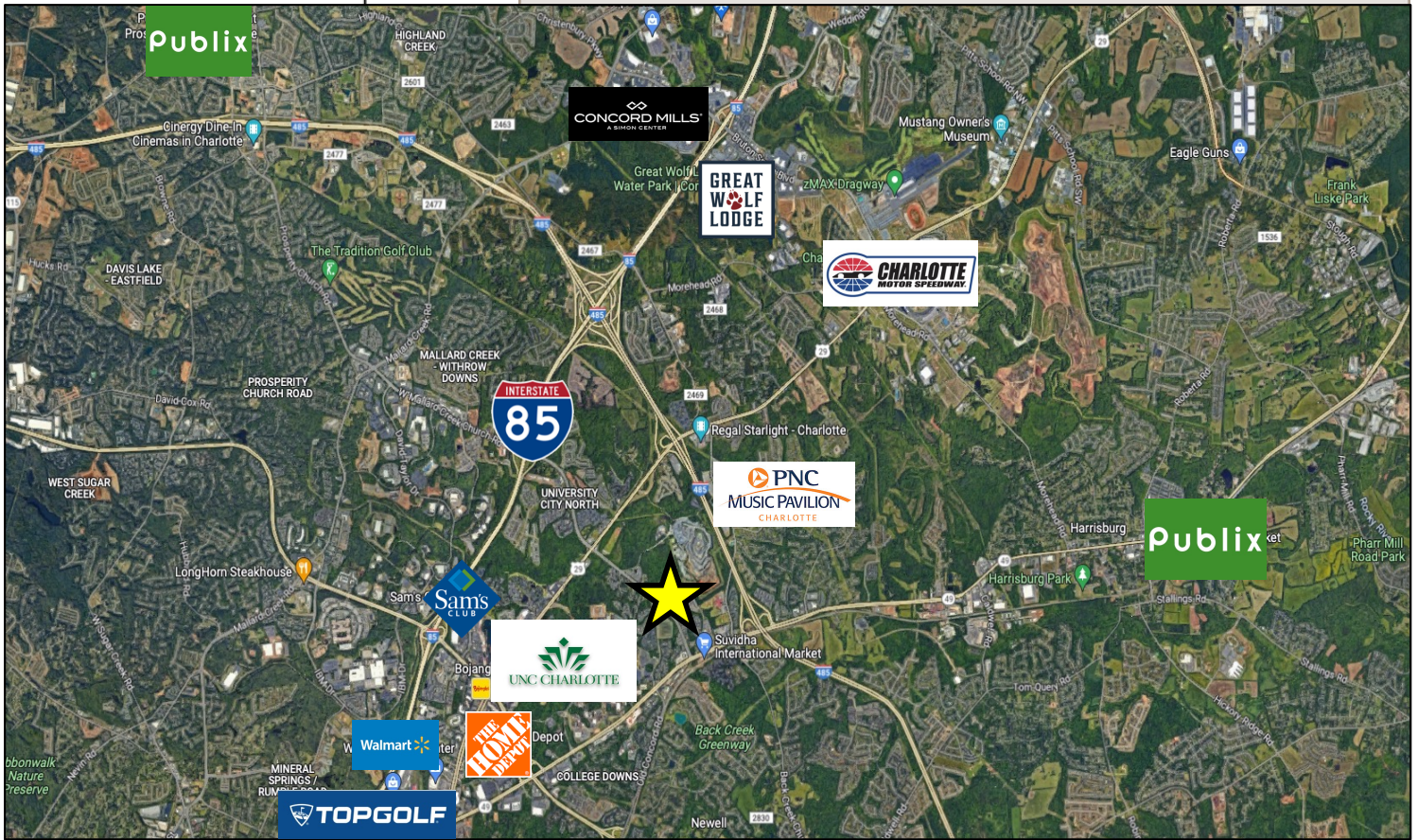
Zoned INST

± 1.14 acres

\$750,000 Asking Price



Every effort has been made to ensure the accuracy of the information presented but no liability is assumed for errors or omissions. This offering is subject to prior sale, lease, change or withdrawal without prior notice and approval of owner.



CONTACT

RED Partners

Rob Hord
&
Bobby Edwards
Bobby@redpart.com
(704)909-2484

www.redpart.com

Site Connectivity

- Adjacent to UNC Charlotte
- Less than 1.5 miles to I-485
- Less than 2 miles to I-85
- 12 miles to Uptown Charlotte