

SOUTH END OFFICE CONDO FOR LEASE



CAMDEN SQUIRE VILLAGE WEST

**1910 Abbott St.
Suite 204
Charlotte, NC 28203**

CONTACT :

Jon Beall
jon@redpart.com
(704) 962-0606 (m)
(704) 909-2471 (d)

www.redpart.com

RED Partners

SIZE: 1,632 sq. ft. (per Mecklenburg Co. tax records)

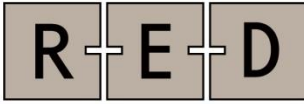
DESCRIPTION: Contemporary office loft in Historic South End.
Walking distance to the East / West Light Rail Station
Open floor plan with exposed wood ceiling and lofted office space.
Dedicated break area / kitchen
End unit with windows on 3 sides provides abundant natural lighting
Located in the heart South End within walking distance to all of South End's most popular amenities.

LANDLORD WILL PROVIDE A \$300 MONTHLY PARKING CREDIT FOR THE DECK ON DOGGETT ST.

MARKET: South End is Charlotte's MOST VIBRANT market.

LOCATION: 2923 South Tryon - in Historic South End Charlotte.

\$3,800 / month (mod. gross)



REAL ESTATE DEVELOPMENT PARTNERS

PROPERTY LOCATION



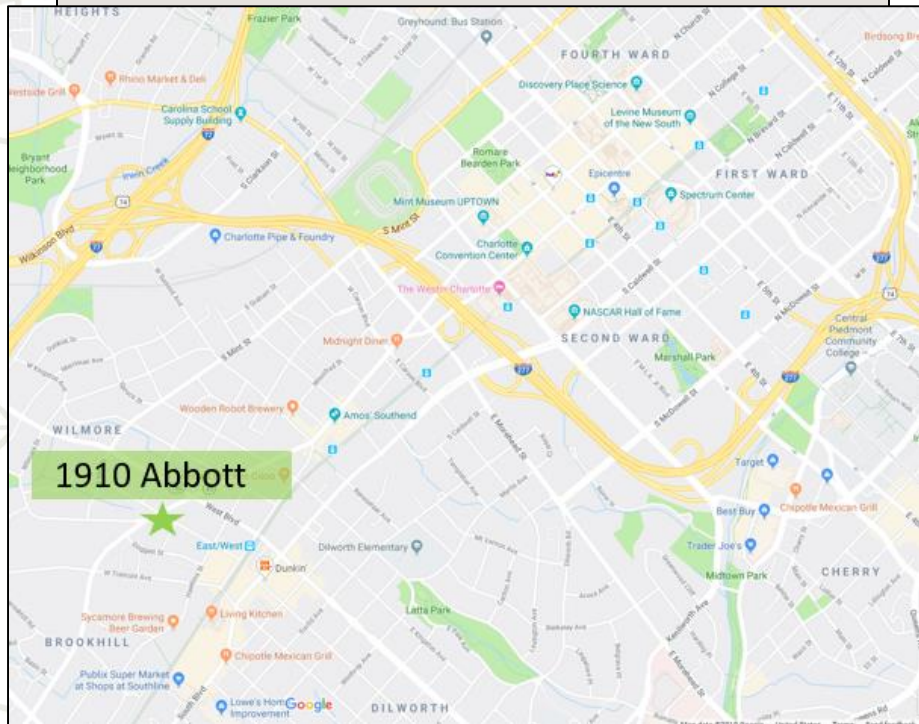
**1910 Abbott St.
Suite 204
Charlotte, NC 28203**

CONTACT :

Jon Beall
jon@redpart.com
(704) 962-0606 (m)
(704) 909-2471 (d)

www.redpart.com

RED Partners

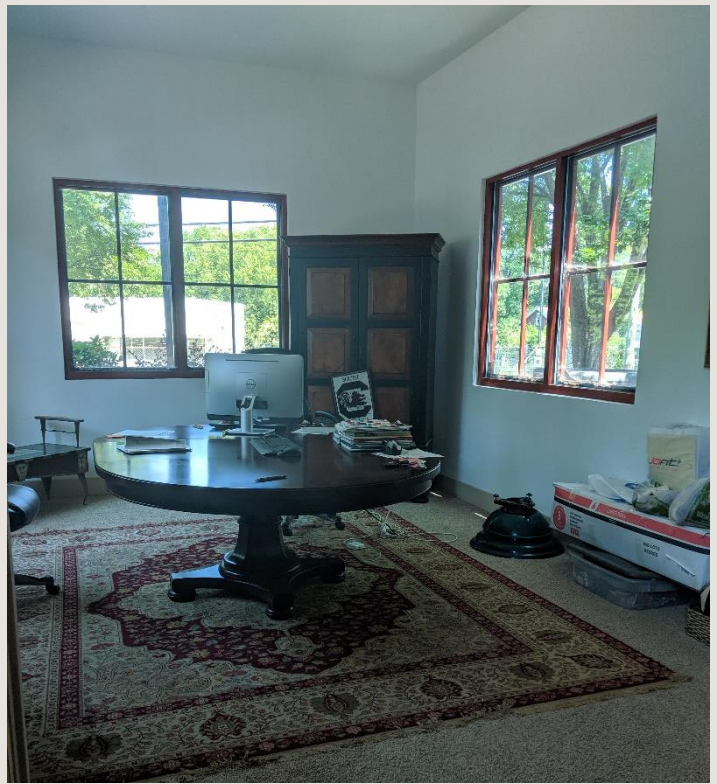




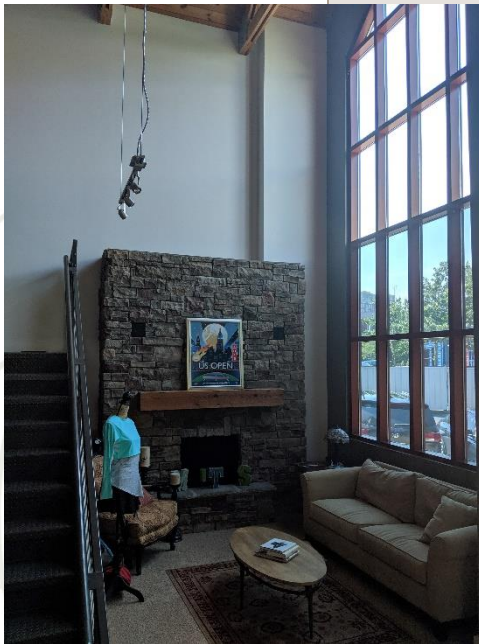
REAL
ESTATE
DEVELOPMENT
PARTNERS



Lofted Office / Open Space



Private office / Conference Room



CONTACT :

Jon Beall
jon@redpart.com
(704) 962-0606 (m)
(704) 909-2471 (d)
www.redpart.com
RED Partners

